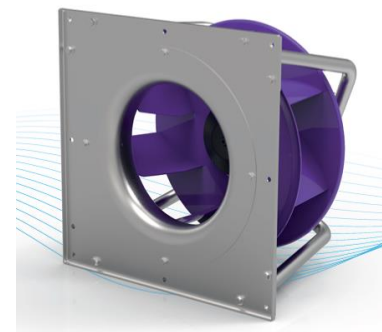


Specification of: PFP A1-0630 3.5kW 400V-3F M6H8

Direct driven high-performance centrifugal fan PFP

Motorized impeller with high system efficiency, with matching inlet nozzle, loose, suitable for horizontal or vertical installation, specifically developed and optimized for use without a scroll case. Equipped with flow measuring device IMV as a standard feature. Aluminium-made centrifugal impeller with 7 backward inclined welded blades. The wheel is directly fitted to a brushless external-rotor motor, with no transmission losses. The complete unit is dynamically balanced according to DIN ISO 21940-11. Light-weight motor frame cast from corrosion-resistant aluminium. A three-phase sensorless driver is fully integrated into the motor. Continuous speed control of the Drive System by 0 ... 10 V analogue signal, or with Modbus RS485-compliant interface. All the drive system is protected according to class IP 55. Power supply 400 V – 50/60 Hz. Air performance ratings according to AMCA 210-07 (Fig. 12) and ISO 5801:2007 (Fig. 41 and par. 30.3).

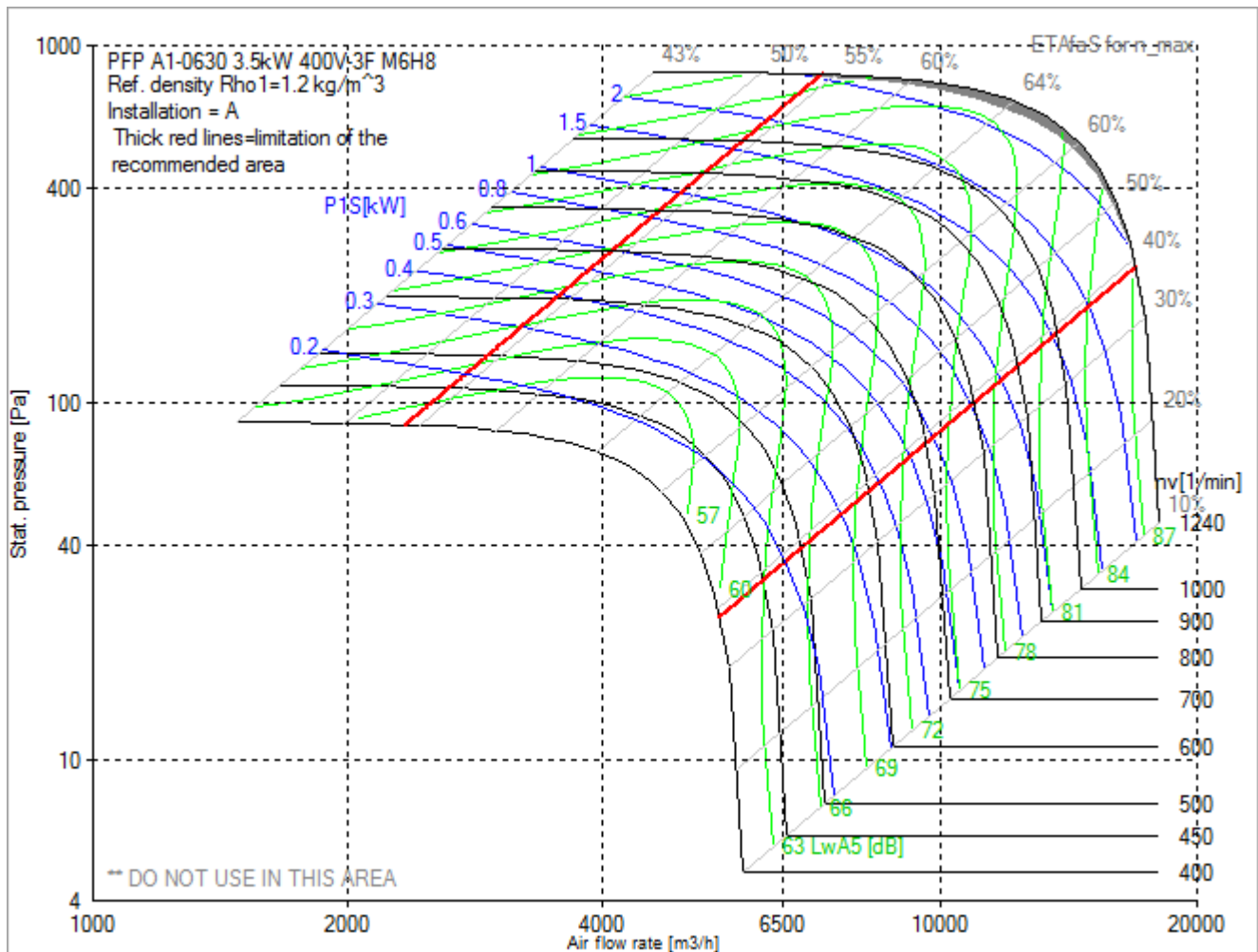


Technical data of the fan: PFP A1-0630 3.5kW 400V-3F M6H8

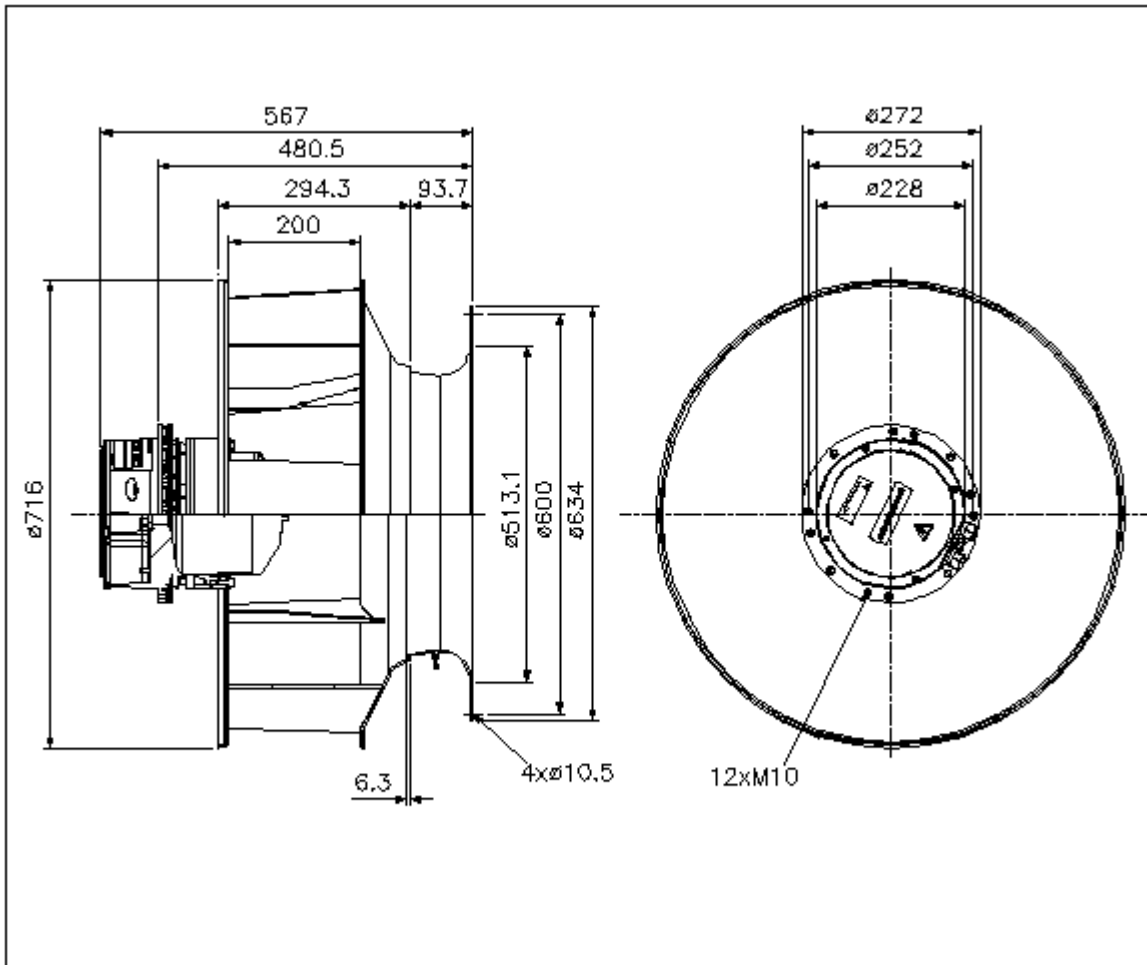
fulfills the ErP requirements 2015

Description	Value Dimension
Installation acc. DIN 24163 Part 1	A
Reference density (ρ_{01})	1.20 kg/m ³
Medium temperature (t)	20 C
Fan weight	31 kg
Feed data	
Main's frequency (f_N)	50/60 Hz
Voltage (U_N)	3~ 400 V
Phases-Voltage-Frequency	3~400-50 V-Hz
Power (P_N)	0 kW
operational limits	
Max. fan speed (n_{vmax})	1235 min ⁻¹
Max. absorbed power of the system (P_{maxS})	3.50 kW
max. current: Inverter out resp. control unit in (I_{max})	5.3 A
Temperature range for conveying medium ($t_{min} \dots t_{max}$)	-20...40 C
ErP-Data at best efficiency and density - kg/m³	
measurement- / efficiency category	A / static
design status of VSD	VSD is integrated
overall efficiency ($\eta_{A,opt}$)	66.5 %
achieved efficiency grade (N_{ist})	71.4
required efficiency grade in 2013 / 2015 (N)	58 / 62
Air flow rate (V_{opt})	11446 m ³ /h
pressure rise (dp_{opt})	683 Pa
Fan speed (n_{vopt})	1206 min ⁻¹
motor power input (P_{1opt})	3.27 kW
specific ratio (d_{dpopt})	1.007

Fan curve to PFP A1-0630 3.5kW 400V-3F M6H8

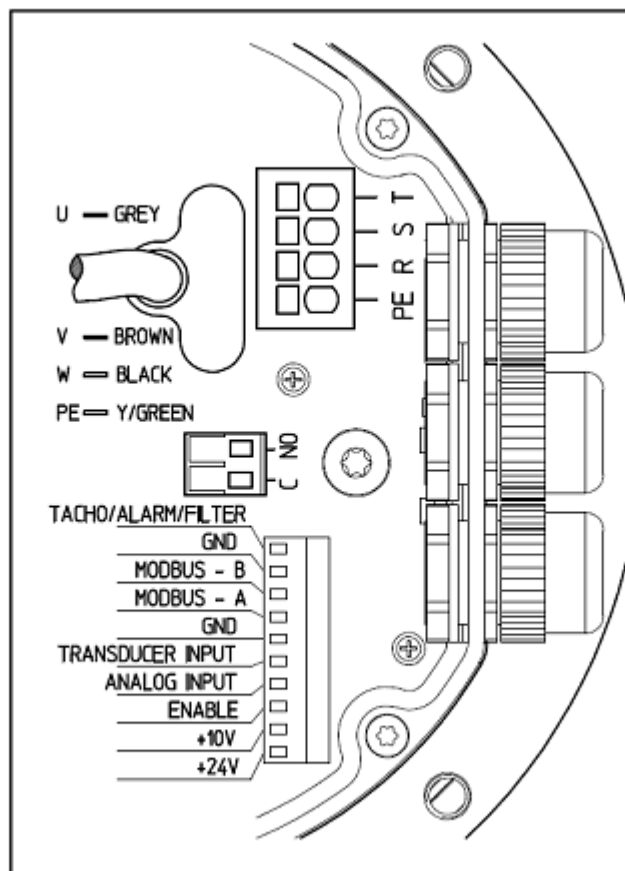


Dimensions to PFP A1-0630 3.5kW 400V-3F M6H8



Rotation: RD
 Handing: 90

Wiring diagram of the fan PFP A1-0630 3.5kW 400V-3F M6H8



11-10-2017 5Z

Wiring diagram for connection to: [mains - VSD - motor](#)
Rotation: [LG](#)